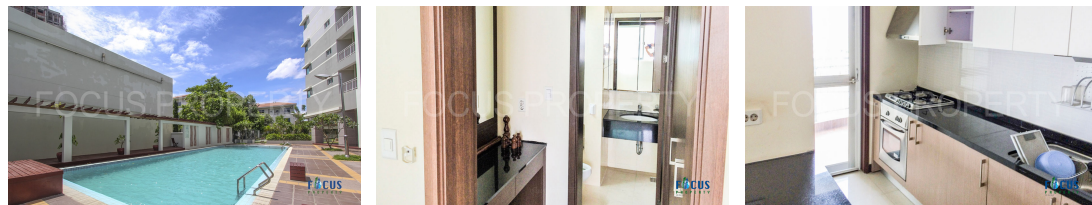


3 Bedroom for Sale at Camko City

Address: Tuol Sangke, Russey Keo, Phnom Penh



CONTACT AGENT



CENTURY21 MEKONG

CEO

H/P: +85595955777

Email: chrek.soknim@c21mekong.com.kh

FACE AND FEATURES

Type	Floor	Bed	Bath	Total Area	Private Area
Condo	15	3	2	148m ²	129m ²

Price (sqm) Year Build

1,132 2015

For Sale > **\$168,000** Est. Mortgage: \$1,264/month

DESCRIPTION

World City Co., Ltd. is a world-leading company in the field of property and infrastructures development and investment. World City Co., Ltd. is currently developing the "Phnom Penh New Town" situated in the Pong Peay Lake Development Zone in Phnom Penh, Kingdom of Cambodia. "Phnom Penh New Town" is the 1st modern urban development project in the Cambodia. This project is planned and invested by Korean investors Camko City means that Cambodia and Korea. it's created by World City Co., Ltd and the project is divided into six phases. The 1st phase of the project starts in December 2005. It comprises of Condominium, Villas, and Townhouses, When built the Phase I. Camko City is located in the Russei Keo District, about 3 kilometer north of the center of Phnom Penh. it was approved as a development zone for a brand new satellite city in February 2003 by the Bureau of Urban Planning of the Municipality of Phnom Penh. Urban Infrastructures: High-speed internet & communication network, 4 to 6 lane paved road, water supply & sewage system, Stable electrical system High-Quality Security System: CCTV, Videophone, Guardhouses Building A102 comprises a modern, stylish 15-storey tower that has a total of 56 condo units, each unit is equipped with high-quality produce which mostly imported from Korea. The area advantages from its easy driving distance to places of interest, business districts, TK Avenue, Aeon Mall 2, universities, international school and more. On top of its great accessibility, Camko City offers

residents and public a good range of amenities as well as numerous retail outlets, F&B shops, supermarkets and other entertainment outlets. Unit Detail Total area: 148.39sqm Private area: 129.41sqm Public area: 19.00sqm