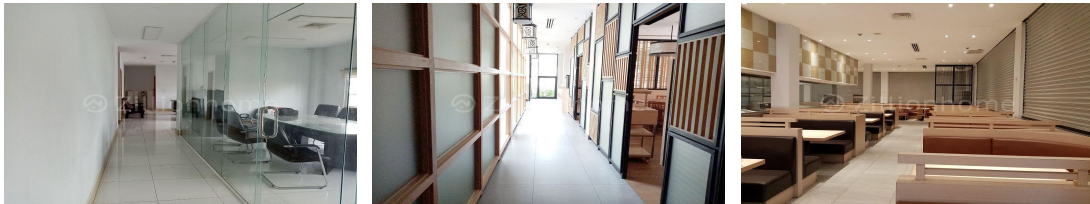


CORNER COMMERCIAL BUILDING FOR LEASE

Address: Tuol Svay Prey Ti Pir, Boeng Keng Kang, Phnom Penh



CONTACT AGENT



COLDWELL BANKER CAMBODIA

H/P: +85523888228 | +85517222699

Email: info@coldwellbanker.com.kh

FACE AND FEATURES

| Type | Bath | Lot (sqm) |
|----------|------|-----------|
| Building | 15 | 759.5 |

For Rent > **\$30,000/mth**

DESCRIPTION

It is good for commercial, bank headquarter, mall, restaurant, office space, cafe shop, etc. Building Size: – 1F size = 470.38 sqm – 2F size=436.25 sqm – 3F size=394.90 sqm – Rooftop which is the same size as 3F Land Size: 31m x 24.5m New building with 3 floors, well equipped with the material, great design Contract: 5 years (3-month deposit) to 10 years (1-year deposit)