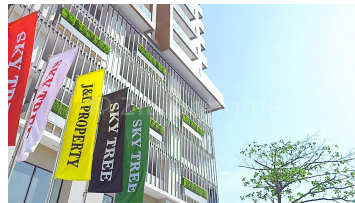
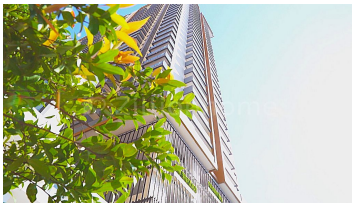




## Apartment for rent in Toul Kork District 1 bedroom 80m<sup>2</sup> 600\$/month

Address: Tuol Sangkae 1, Russey Keo, Phnom Penh



### CONTACT AGENT



**SKY TREE RESIDENCE & HOTEL**

H/P: +85581901688 | +85599220213

Email: skytreeresidence@gmail.com

### FACE AND FEATURES

Type	Floor	Bed	Bath	Total Area	Private Area
Condo	22	1	1	80m <sup>2</sup>	64m <sup>2</sup>
Aircon	Livingroom	Parking			
2	1	1			

**For Rent > \$600/mth**

### DESCRIPTION

SKYTREE located Prime Minister Special Economic Zone. Sky Tree site including fully furnished, free property fee, 24-hour front desk service, 24-hour security control. The building includes AEON supermarkets, pharmacies, ATMs, professional coaches, gyms, sunshine sports, outdoor yoga, dance classrooms, Chinese Kungfu, parent-child outdoor classes, and Amazon Cafe. within 50 meter, including traditional markets, dry cleaners, tailor shops, and mobile phones. Shop, flower shop, TOUS les JOURS cake shop, LUCKY supermarket, PPCC Garden of Eden, TK hairdressing and nail art, various restaurants and Samai Plaza. It is only a 5-minute drive from the financial and embassy districts, a 6-minute drive from the Prime Minister's Office and City Hall, an 8-minute drive from Central Station, and a 20-minute drive from Phnom Penh International Airport. Including the Royal Palace, Silver Pagoda, Mekong River, Pub Street, National Museum, Central Market and Independence Monument.